



**east  
view**

# LandScan™ Global Population Database

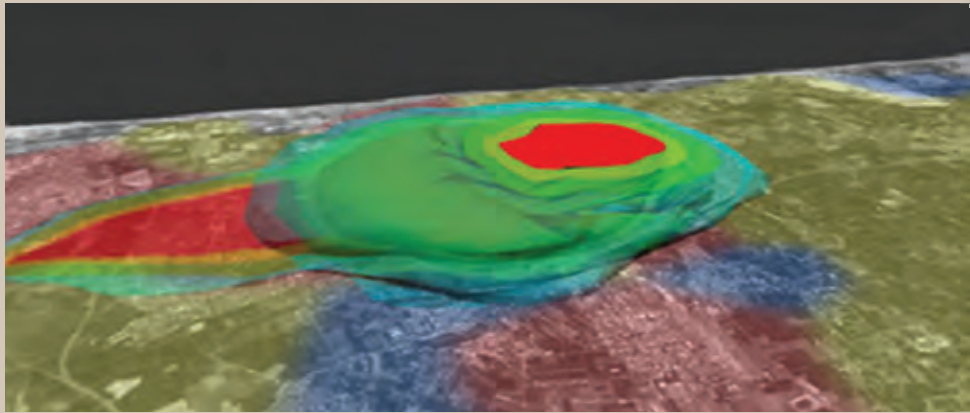
The World's Finest Population Distribution Data



Uncommon information. Extraordinary places.

# LandScan™ Global Population Database

East View Cartographic is now offering the LandScan™ Global Population Database developed by the Department of Energy's Oak Ridge National Laboratory (ORNL). Using an innovative approach with GIS and Remote Sensing, LandScan is the community standard for global population distribution.



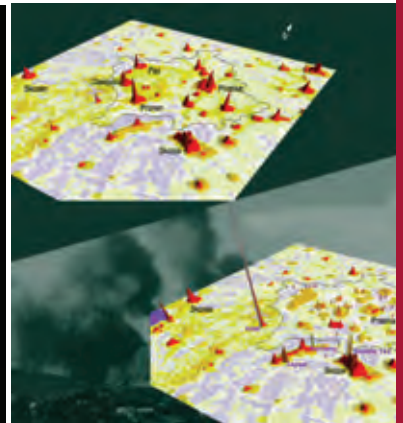
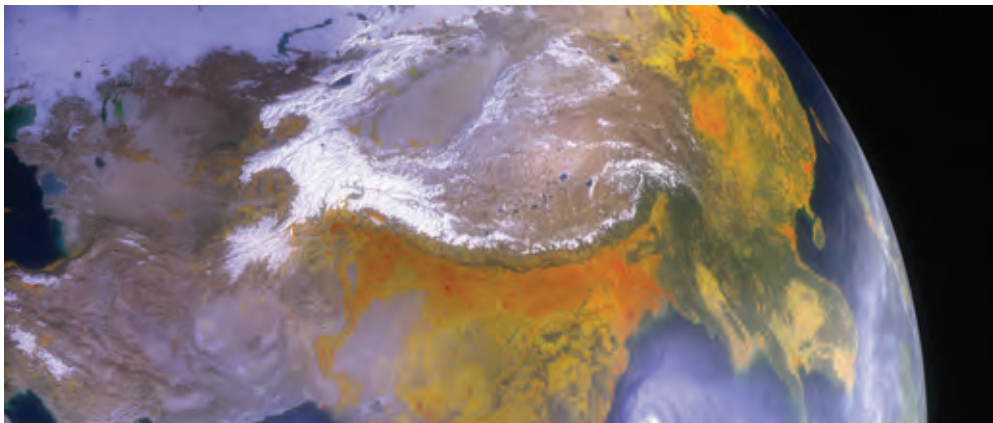
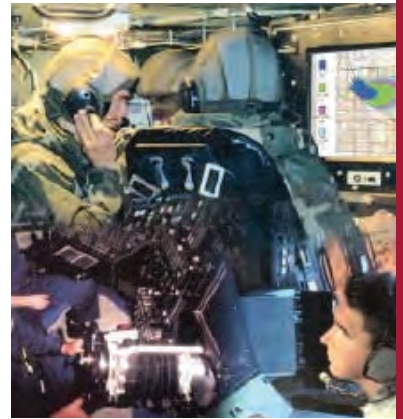
## CRITICAL FEATURES

LandScan is the world's most accurate and reliable, geographically based, distribution model and finest resolution global population database.

- High resolution population distribution data (30 arc seconds or ~1km at equator) in a GIS raster (ESRI Grid) format
- Distribution depicts ambient (24 hr. average) population distribution.
- Sub-national census counts provided by the International Program Center, Bureau of Census.
- Integrated with Transportation Routing (such as TRAGIS) for route-specific small area population impact analysis and atmospheric dispersion models (such as HPAC).
- Upgraded annually

## UTILITY OF LANDSCAN

- Allows quick and simple assessment, estimation, and visualization of population at risk.
- Demographic (age, gender) and socioeconomic characteristics are integrated with population data to allow easy integration with risk and impact assessment models.
- Critical component of Emergency planning and management, Rapid risk assessment, Evacuation planning, Consequence assessment, Mitigation Planning.
- Retail and other business-related expansion.



## COMPLETE OR CUSTOM DATASETS

The LandScan™ dataset is available for purchase by country, region or globally. Also included are a robust set of metadata, documentation, and user's guides to enable you to get the most information possible out of this data.





### Cultural Data Studies

- Urban density
- Urban "Z" dimension
- Rural densities and settlement type: nuclear, linear, dispersed
- Economic zones
- Agricultural Intensity

### Insurance Applications

- Risk analysis
- Life insurance forecasting
- Data warehousing
- Market predictions

OP2010	CTRYNUM	LINK	PTOT_0_4
140316	147	3925	0.07126058
108496	147	3926	0.07124687
39264	147	3927	0.07126121
72827	147	3928	0.07125105
231139	148	3929	0.17233353
1089443	149	3037	0.09502287
2869736	149	3038	0.09502372
489223	149	3036	0.09502343
796865	149	3040	0.09502362

### Telecommunications Network Planning

- Population count assessment
- Communication placement
- Urban land use clutter data enhancement
- Infrastructure improvements

### Spatial Data Analysis

- Raster (land cover, elevation, slope)
- Lines and Polygons (roads, rails, waterways, urban areas)
- Polygons (urban/rural areas, administrative boundaries)
- Points (small towns and villages, building data)

**New and Improved access to LandScan!**

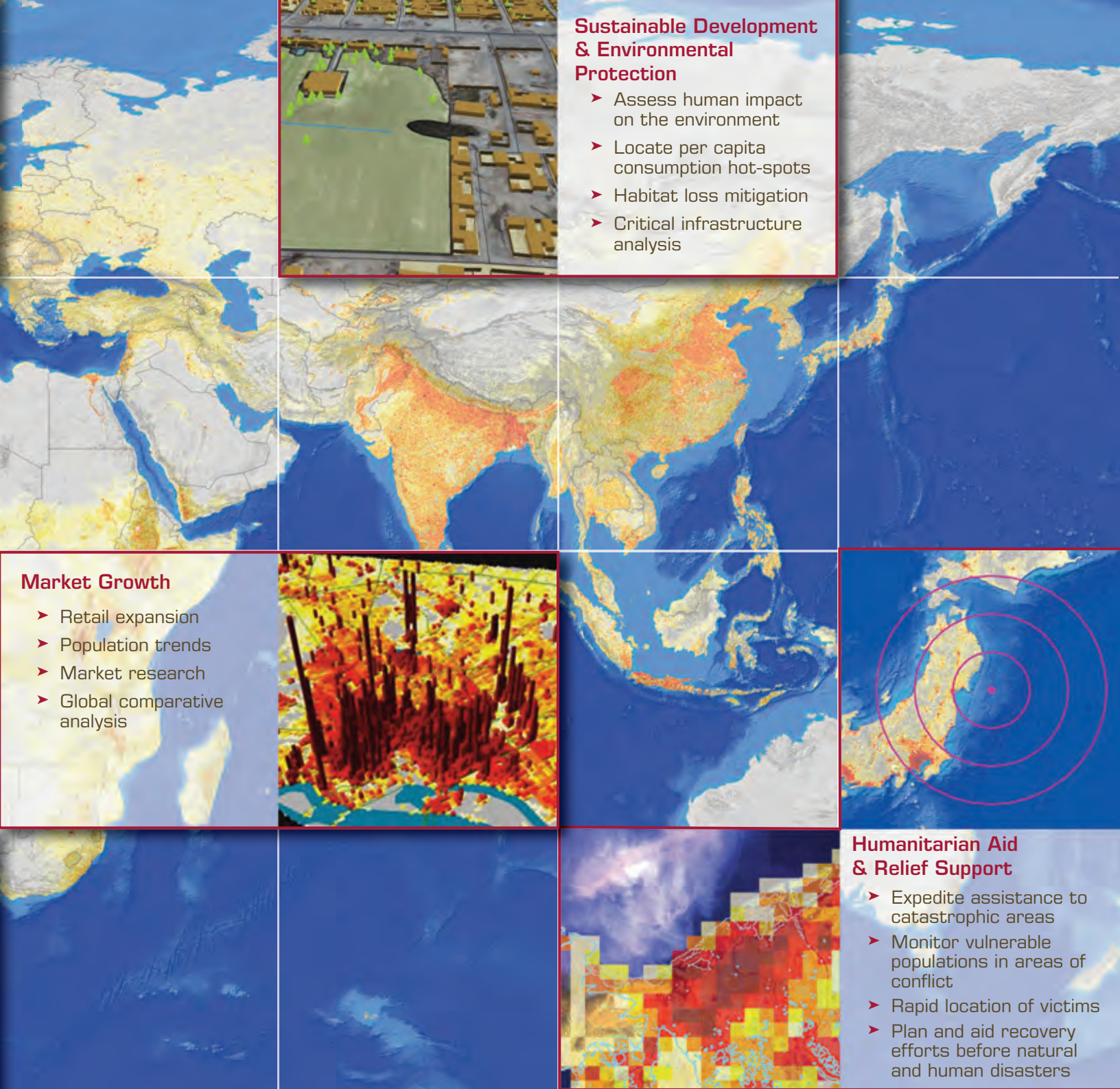
LandScan is now available in three



**FTP/DVD** – An archival copy of the data delivered electronically via FTP or mailed on a DVD.







convenient access methods offering 24/7 access and unlimited simultaneous users!

**WMS/WCS** - Easy access for GIS users to connect to the data hosted via a Web Mapping Service and Web Coverage Service with any GIS software.

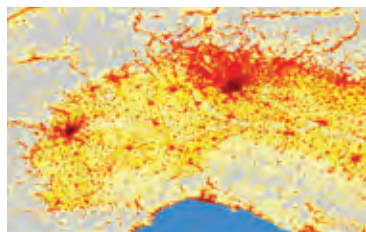
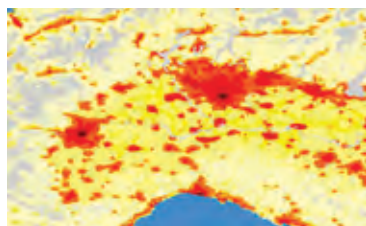


**WebApp** - Easy access for non-GIS users to view and analyze the data via an easy to use Web Application accessible by anyone with a web browser.



[illegible]

## ANNUAL IMPROVEMENTS



## CURRENT USERS OF LANDSCAN



## East View

**landscan@eastview.com**